

FIG. 1

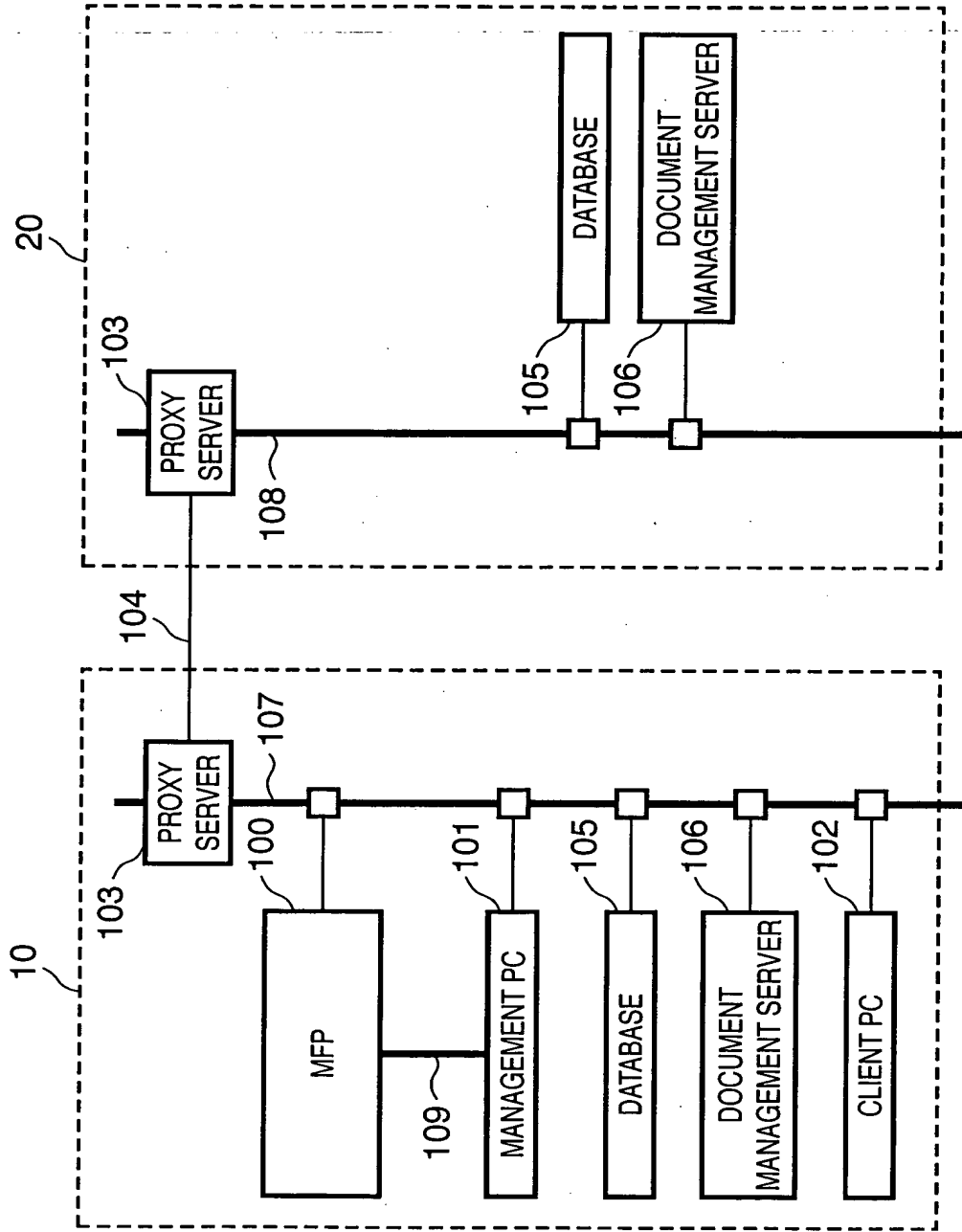


FIG. 2

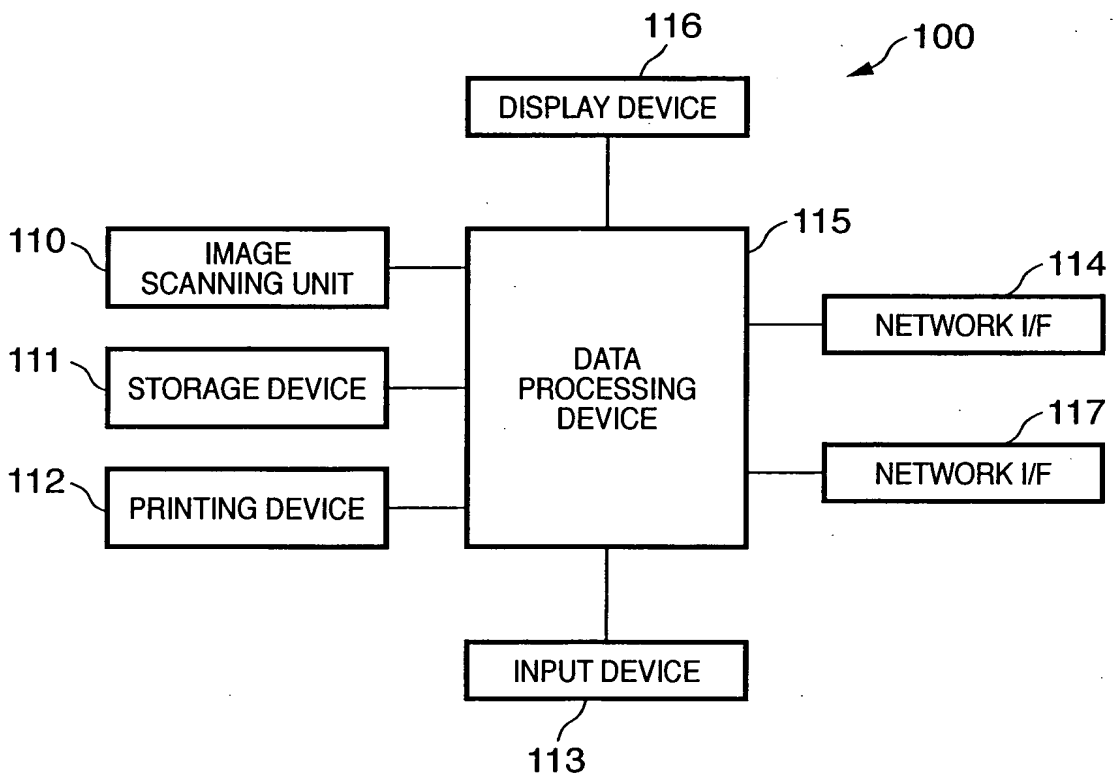


FIG. 3

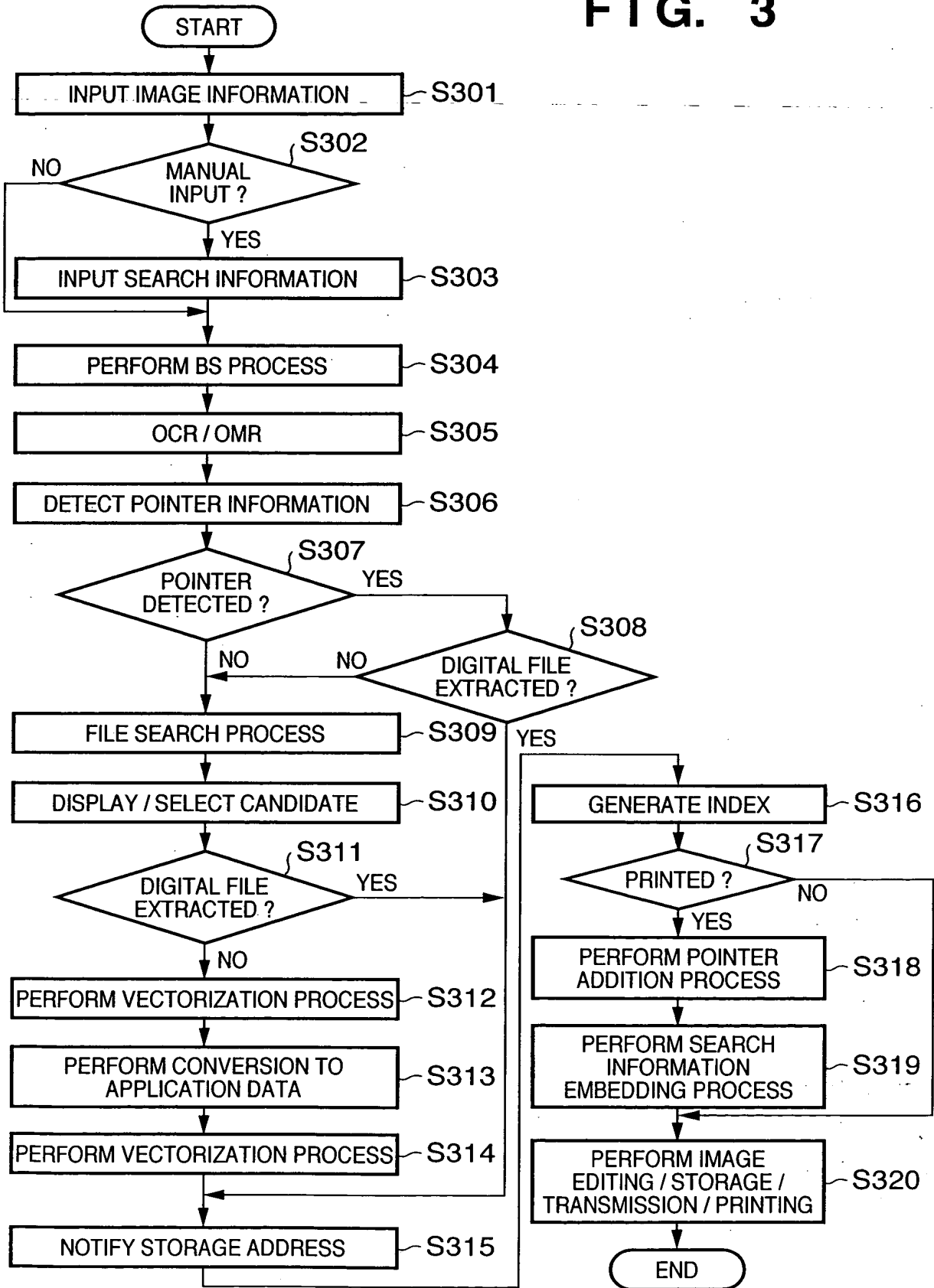
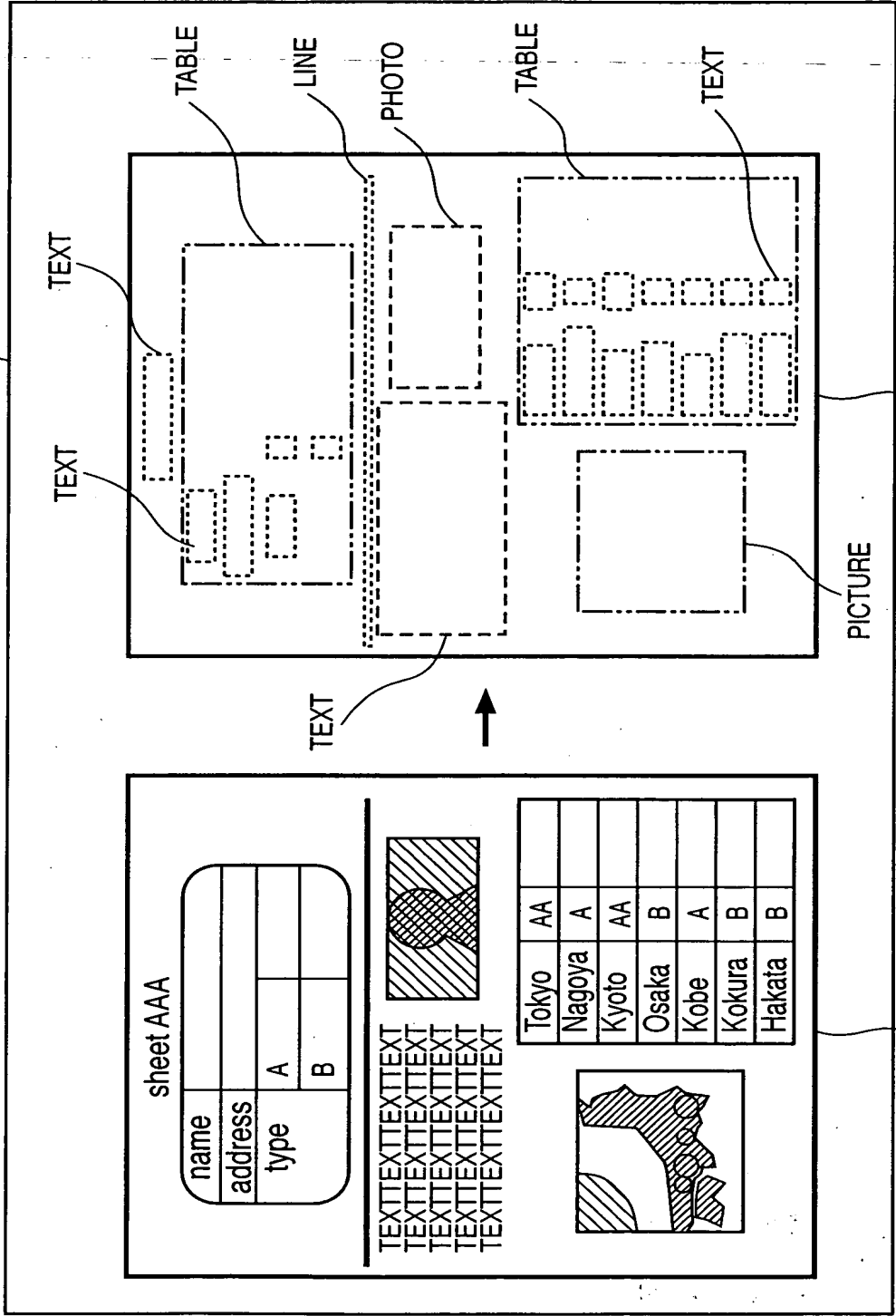


FIG. 4

116



42

41

FIG. 5

BLOCK INFORMATION						
	PROPERTY	COORDINATE X	COORDINATE Y	WIDTH W	HEIGHT H	OCR INFORMATION
BLOCK 1	1	X1	Y1	W1	H1	AVAILABLE
BLOCK 2	3	X2	Y2	W2	H2	AVAILABLE
BLOCK 3	2	X3	Y3	W3	H3	NOT AVAILABLE
BLOCK 4	1	X4	Y4	W4	H4	AVAILABLE
BLOCK 5	3	X5	Y5	W5	H5	AVAILABLE
BLOCK 6	5	X6	Y6	W6	H6	NOT AVAILABLE

PROPERTY 1 : text 2 : picture 3 : table 4 : line 5 : photo

INPUT FILE INFORMATION	
TOTAL NUMBER OF BLOCKS	N (=6)

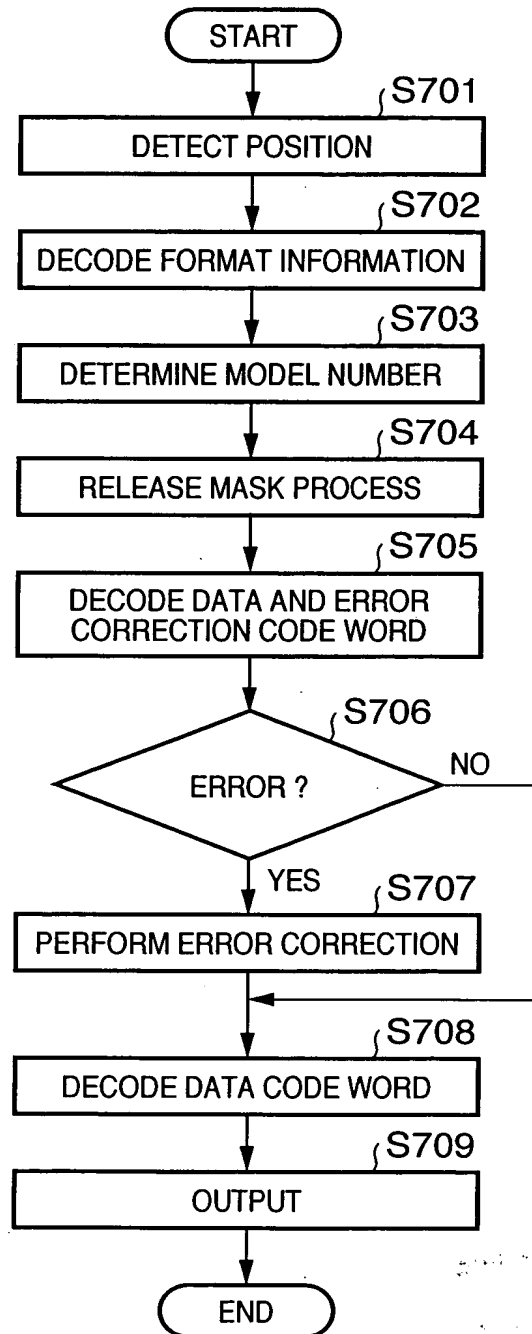
FIG. 6

FIG. 7

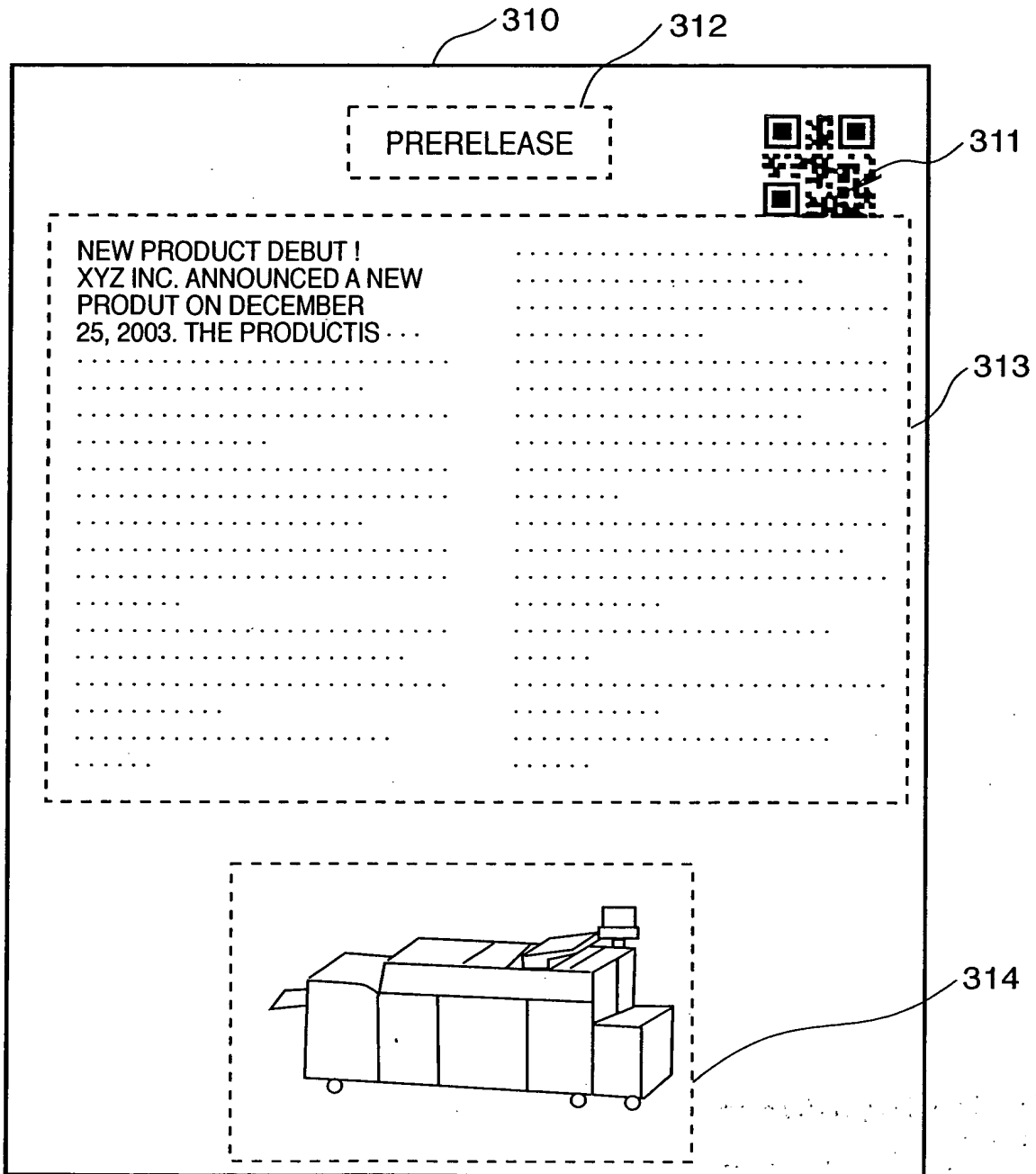


FIG. 8

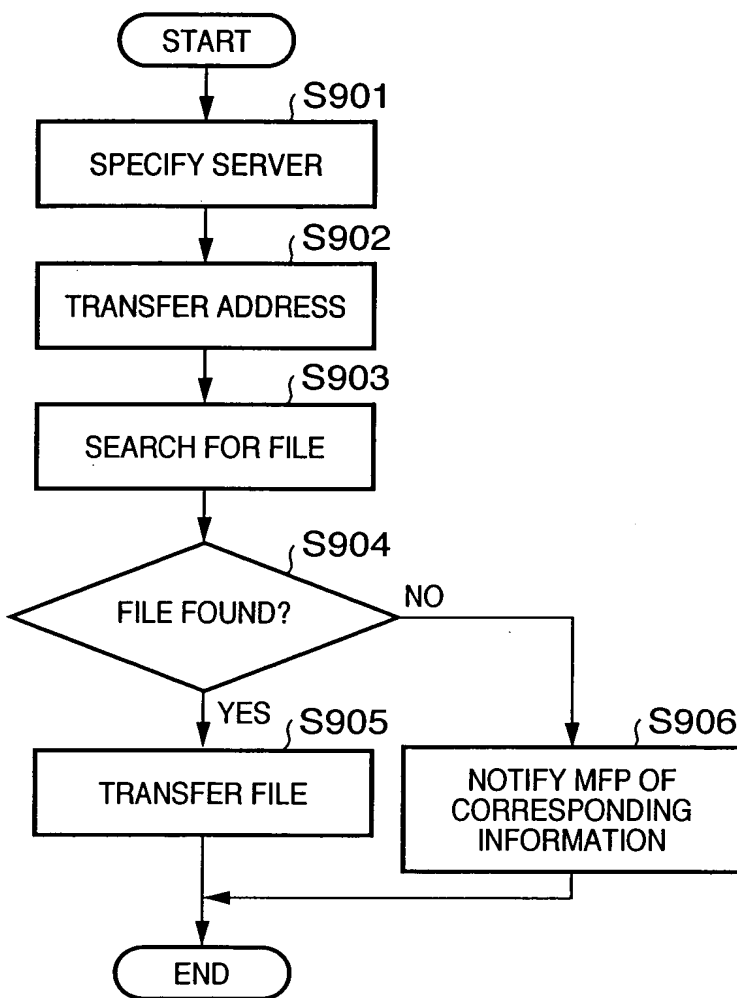


FIG. 9

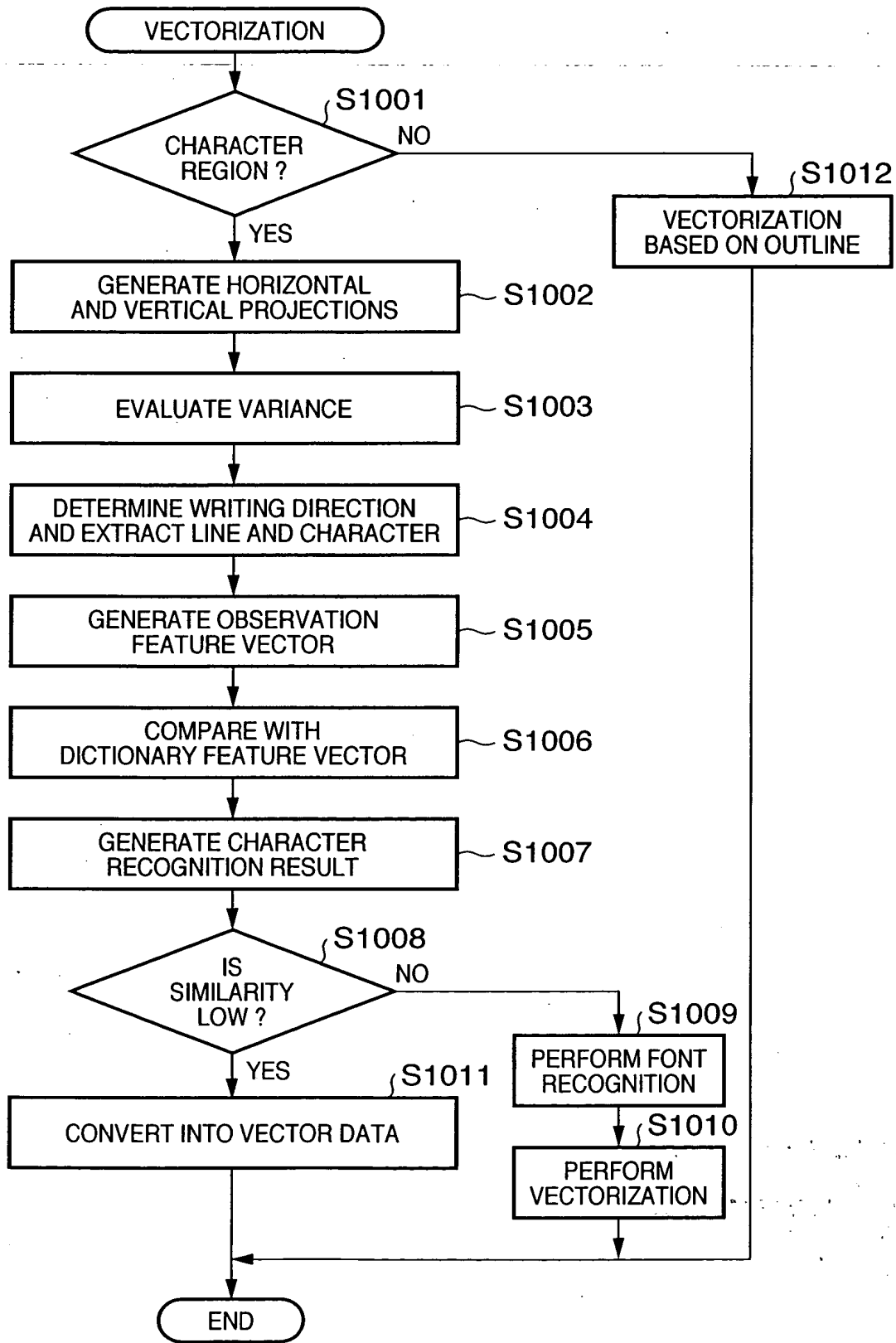


FIG. 10

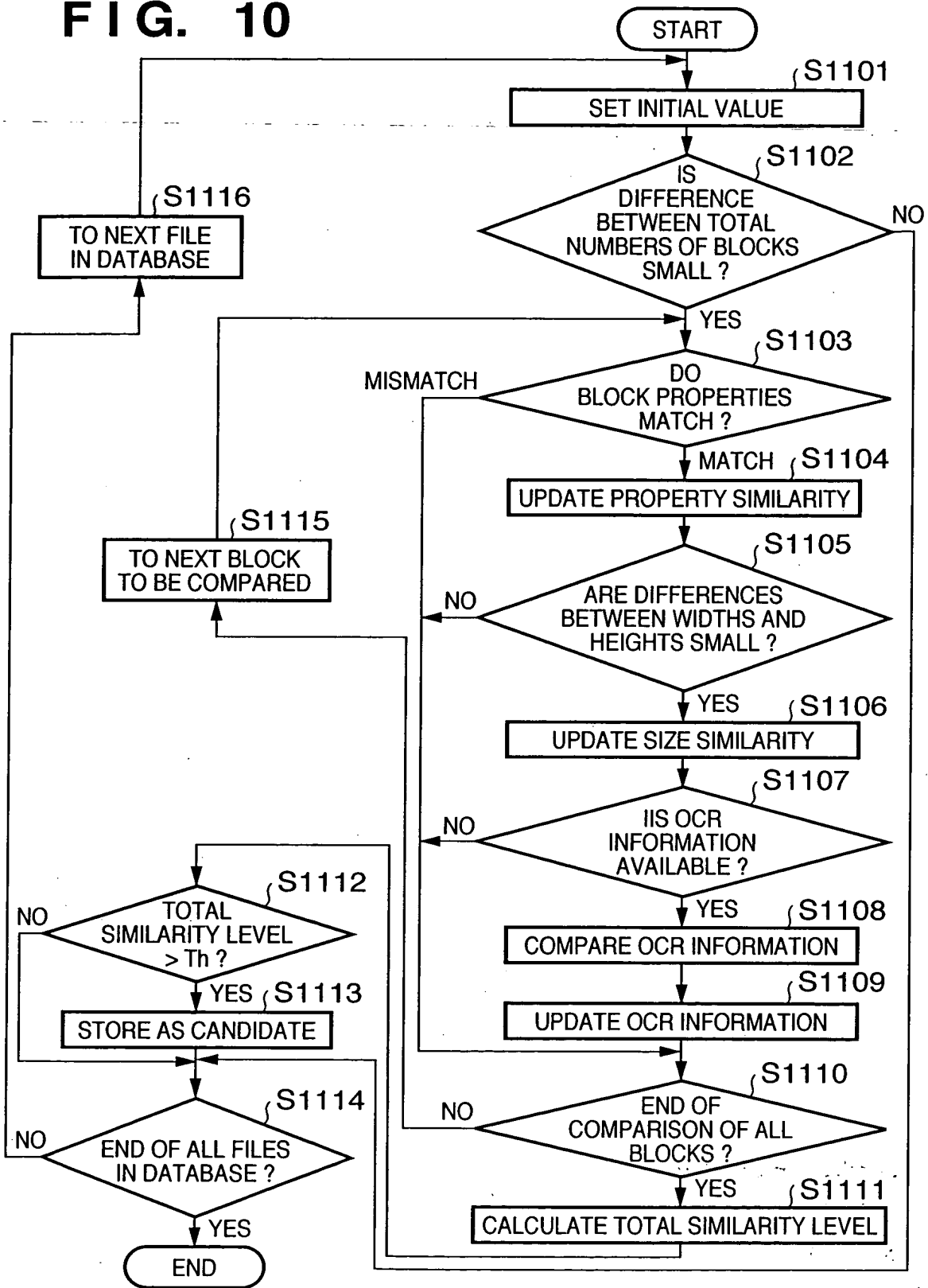


FIG. 11

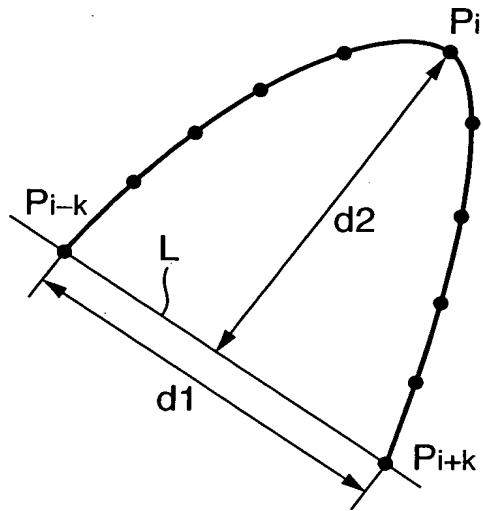


FIG. 12

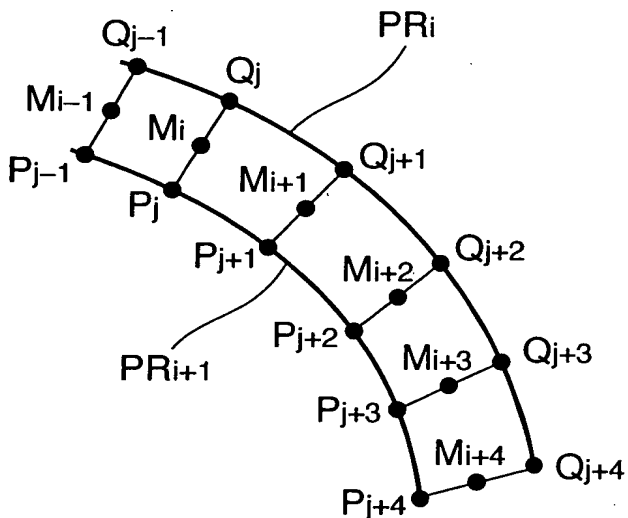


FIG. 13

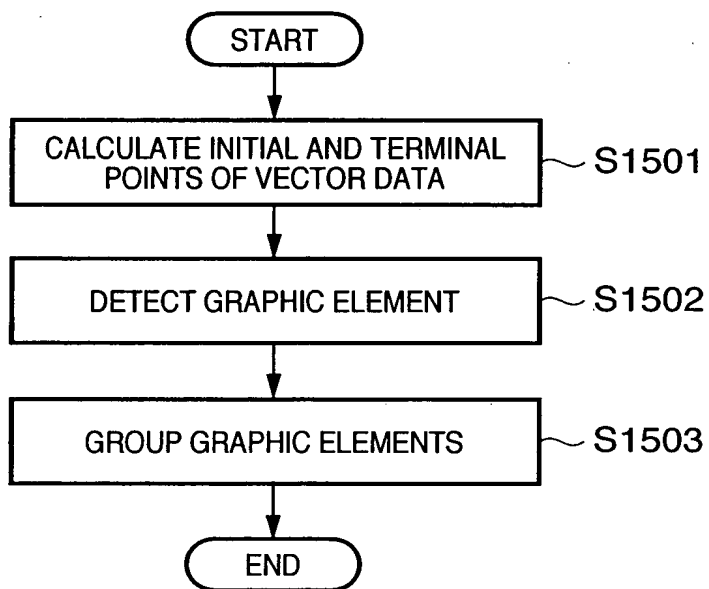


FIG. 14

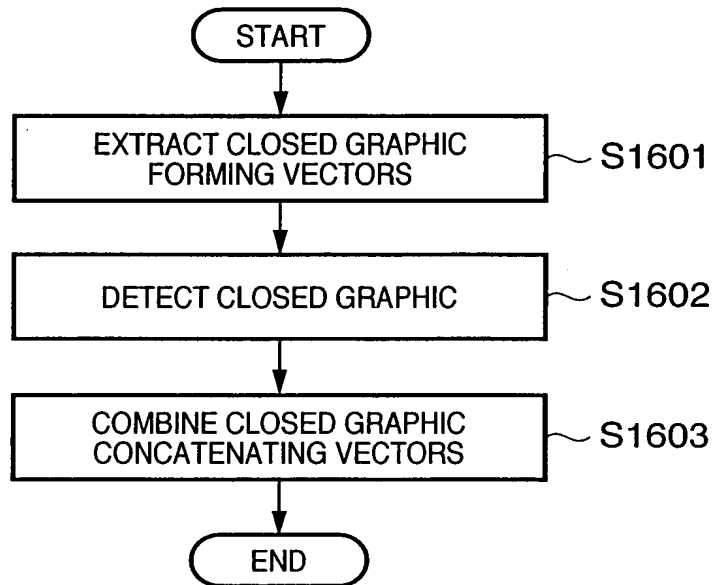


FIG. 15

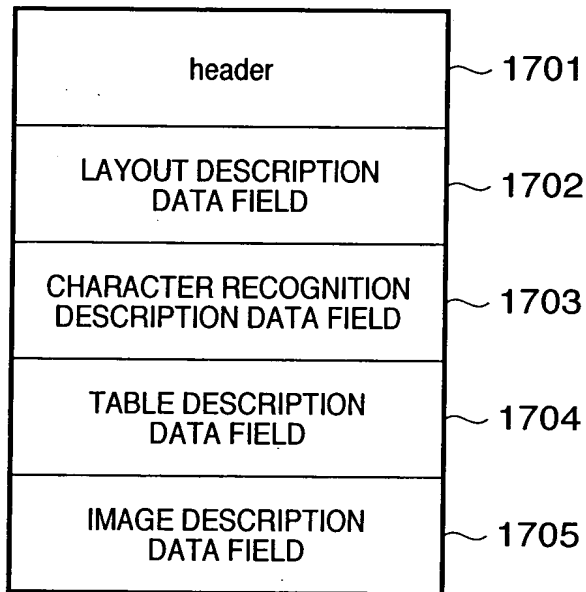


FIG. 16

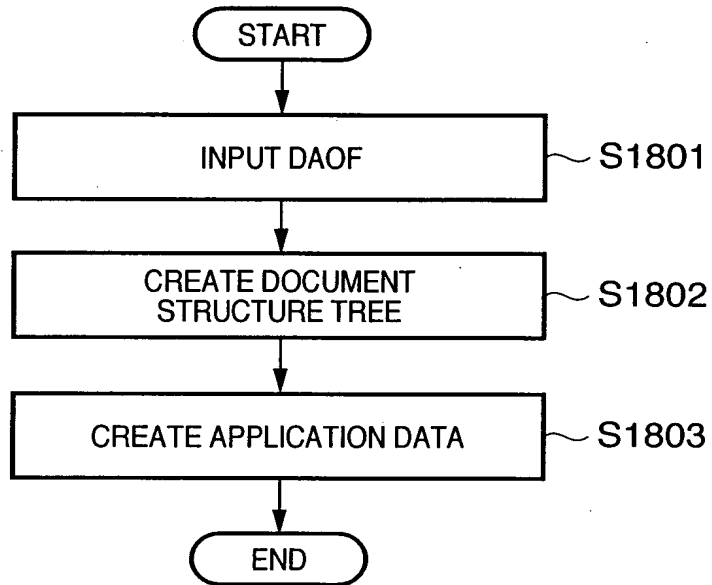


FIG. 17

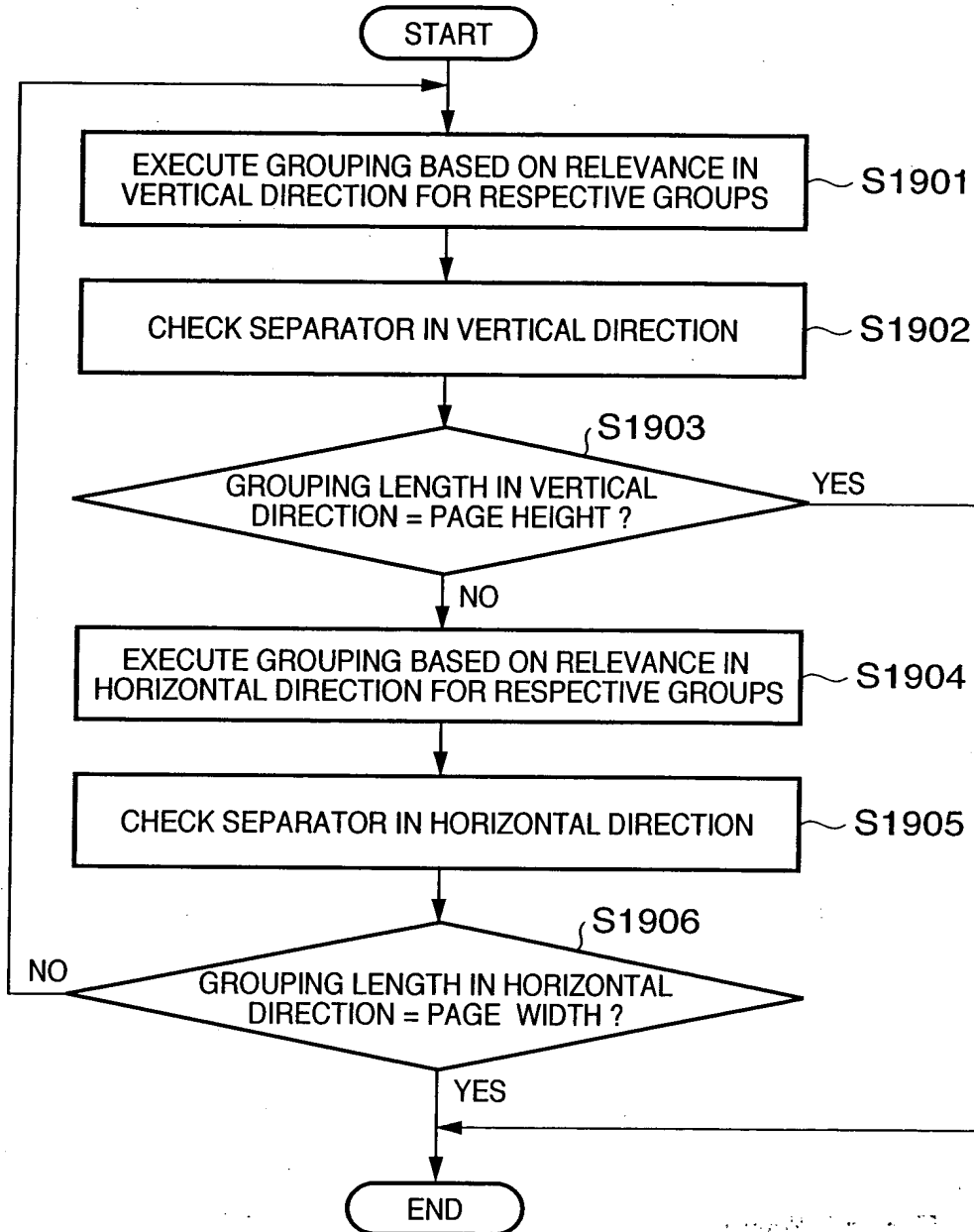
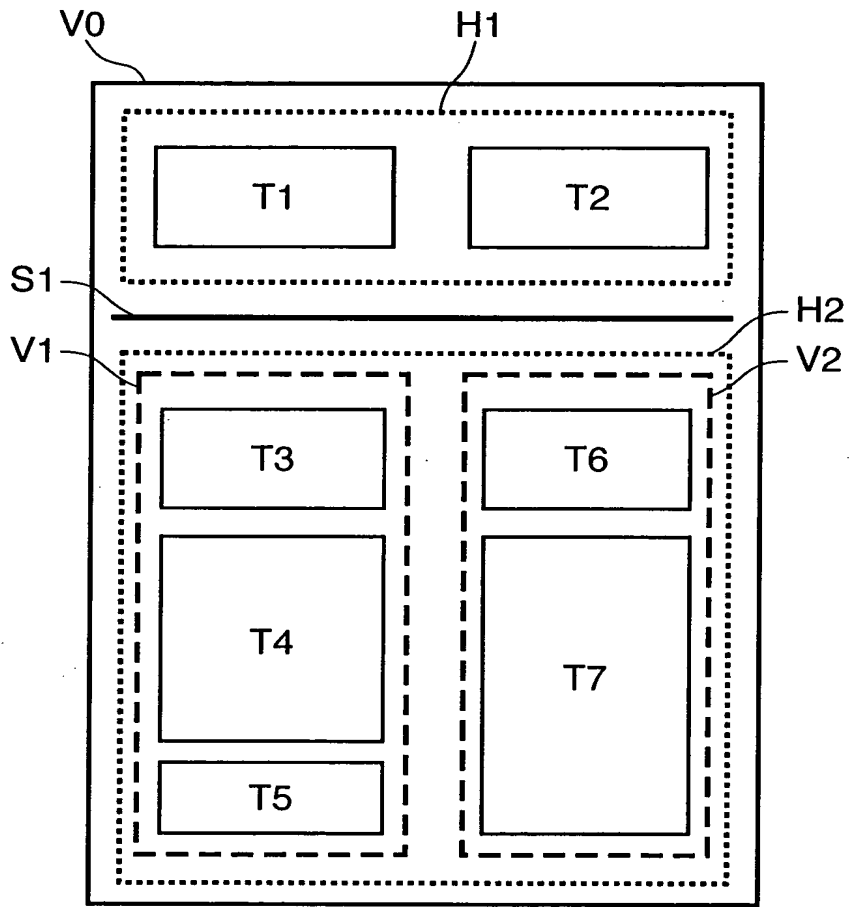
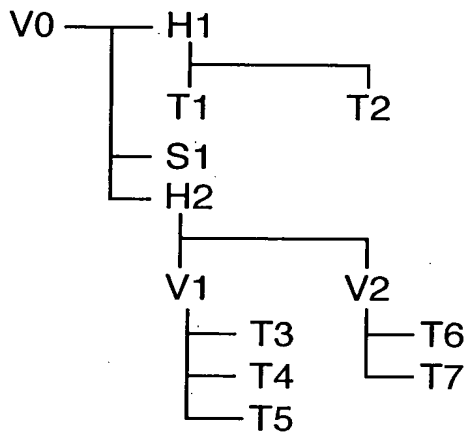


FIG. 18



not to be construed as a limitation on the scope of the present invention. The present invention is defined by the following claims.

FIG. 19



ALL INFORMATION CONTAINED
HEREIN IS UNCLASSIFIED
DATE 08-14-2010 BY 60322
UCBAW/STP/STP/STP/STP/STP

FIG. 20

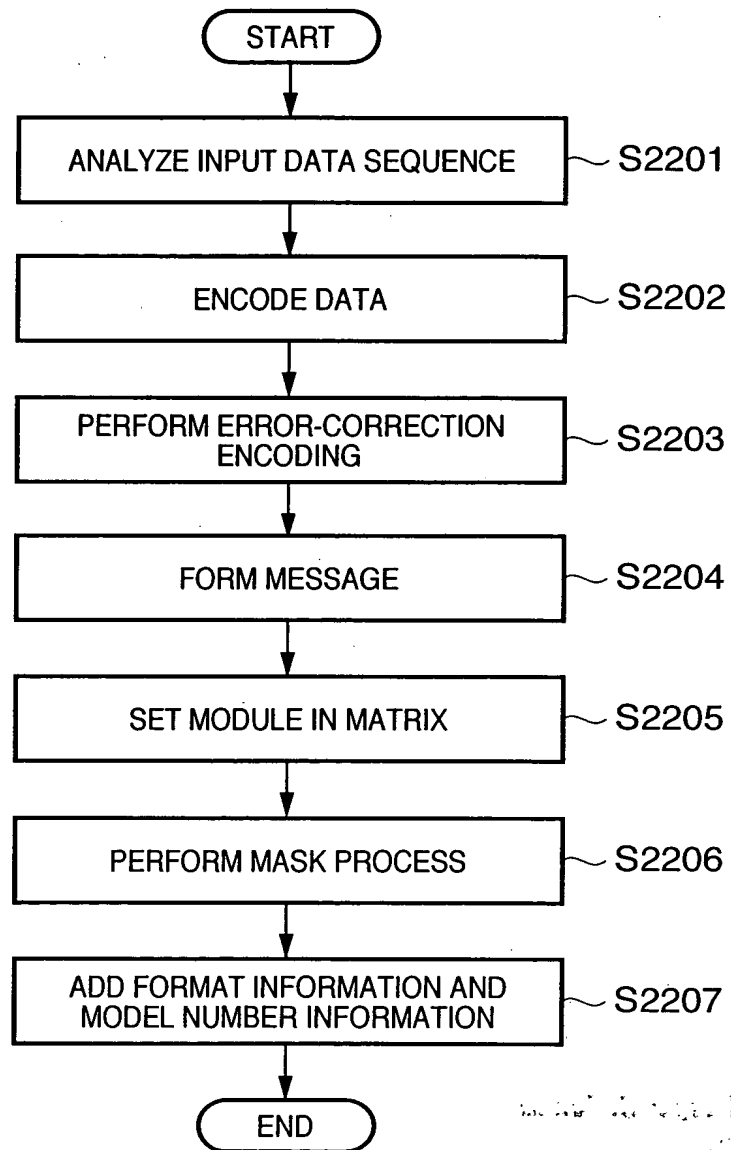


FIG. 20 is a flowchart illustrating a process. The process starts at a START terminal, then proceeds to step S2201: ANALYZE INPUT DATA SEQUENCE. From S2201, the process moves to step S2202: ENCODE DATA. From S2202, the process moves to step S2203: PERFORM ERROR-CORRECTION ENCODING. From S2203, the process moves to step S2204: FORM MESSAGE. From S2204, the process moves to step S2205: SET MODULE IN MATRIX. From S2205, the process moves to step S2206: PERFORM MASK PROCESS. From S2206, the process moves to step S2207: ADD FORMAT INFORMATION AND MODEL NUMBER INFORMATION. Finally, the process ends at an END terminal.